

## Installing SQL Server 2005 Express

**Purpose:** SQL Server 2005 Express Edition is a free version of SQL Server 2005 designed for data-driven applications. SQL Server 2005 Express Edition (SQL Server Express) replaces Microsoft SQL Server 2000 Desktop Engine (MSDE) as the free version of SQL Server. SQL Server 2005 Express Edition does not install .NET Framework 2.0. Before installing SQL Server 2005 Express Edition, you must install .NET Framework 2.0 (Windows Vista users need not perform this step). This document will provide step by step instructions on installing .NET Framework 2.0 as well as SQL Server Express. Both .NET Framework 2.0 and SQL Server Express are available for download from Microsoft's website. Also, it is recommended that you **backup your database before attempting to install SQL Server Express.**

Download Links:

SQL Server 2005 Express

<http://www.microsoft.com/downloads/details.aspx?familyid=220549b5-0b07-4448-8848-dcc397514b41&displaylang=en>

.NET Framework 2.0 (.NET Framework Version 2.0 Redistributable Package (x86))

<http://msdn.microsoft.com/netframework/downloads/updates/default.aspx>

### Installing .NET Framework 2.0 (for non-Windows Vista users)

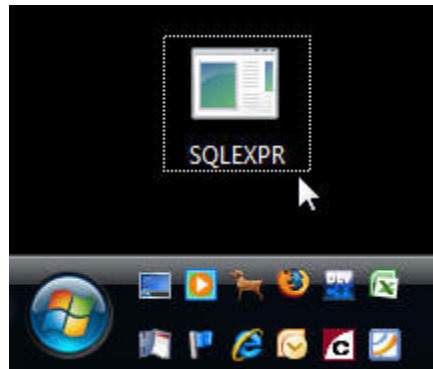
1. Download and save .NET Framework Version 2.0 Redistributable Package (x86) to your Desktop. Double-click on the dotnetfx.exe file to begin the installation.



2. Click the **Next** button.
3. Check the box to accept the terms of the License Agreement. Click the **Install** button. The installation process may take several minutes to complete. When the installation is complete, click the **Finish** button and then restart your computer.

## Installing SQL Server 2005 Express (for all users)

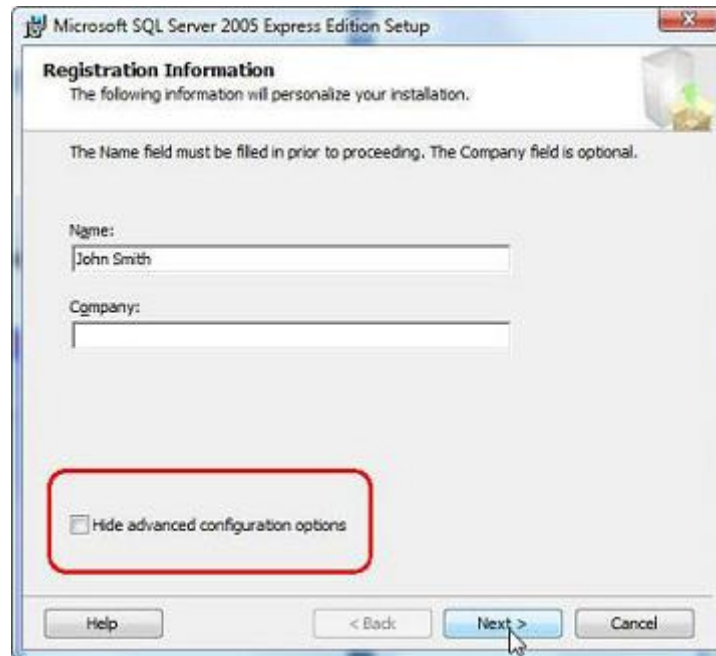
1. Download and save SQL Server 2005 Express to your hard drive. Double-click on the SQLEXP.R.EXE file to begin the installation.



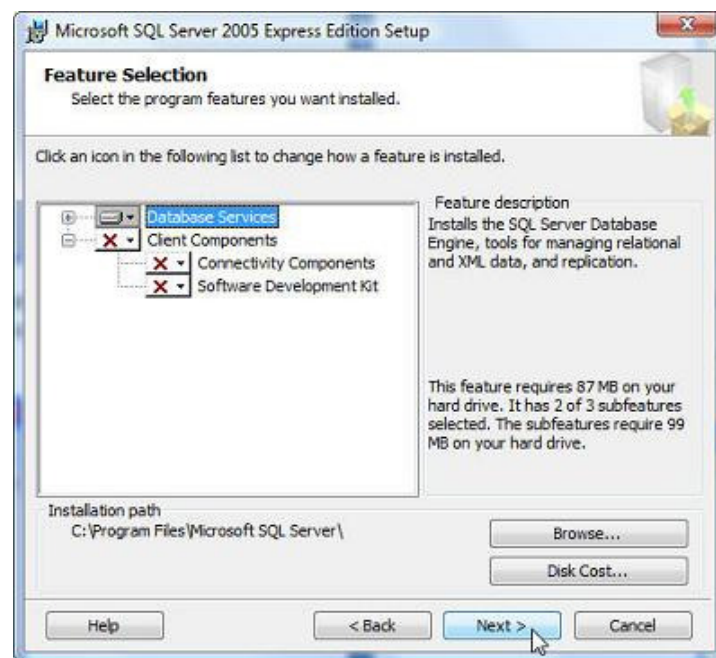
2. Check the box to accept the terms of the License Agreement. Click the **Next** button. The install shield will do a prerequisite check on your system. Once the prerequisite check is completed, click the **Next** button.
3. Click the **Next** button on the installation welcome screen.



- The install shield will now do a system configuration check. If potential installation problems are detected, deal with them accordingly. If the system configuration check is successful click the **Next** button.
- Fill out the Registration Information window and uncheck the **Hide advanced configuration options** box then click the **Next** button.



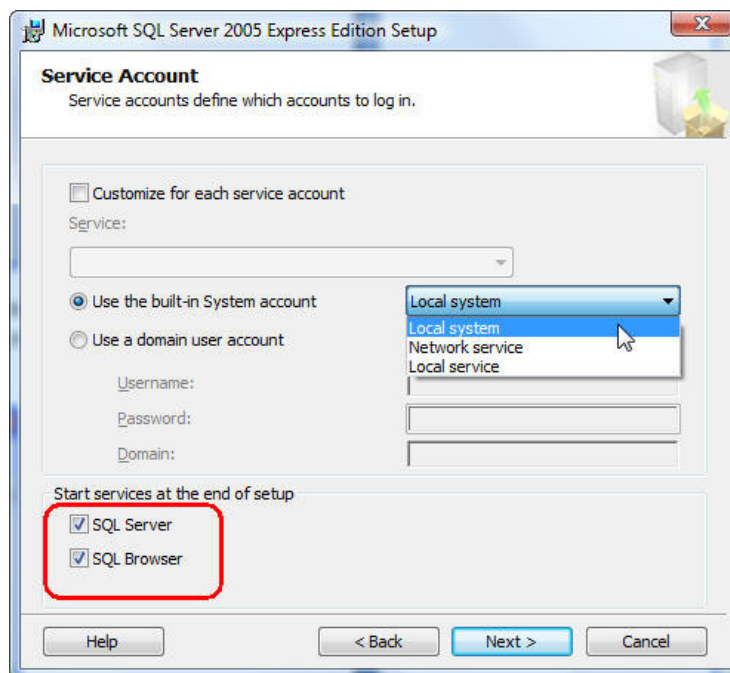
- On the Feature Selection window, Click the **Next** button to continue.



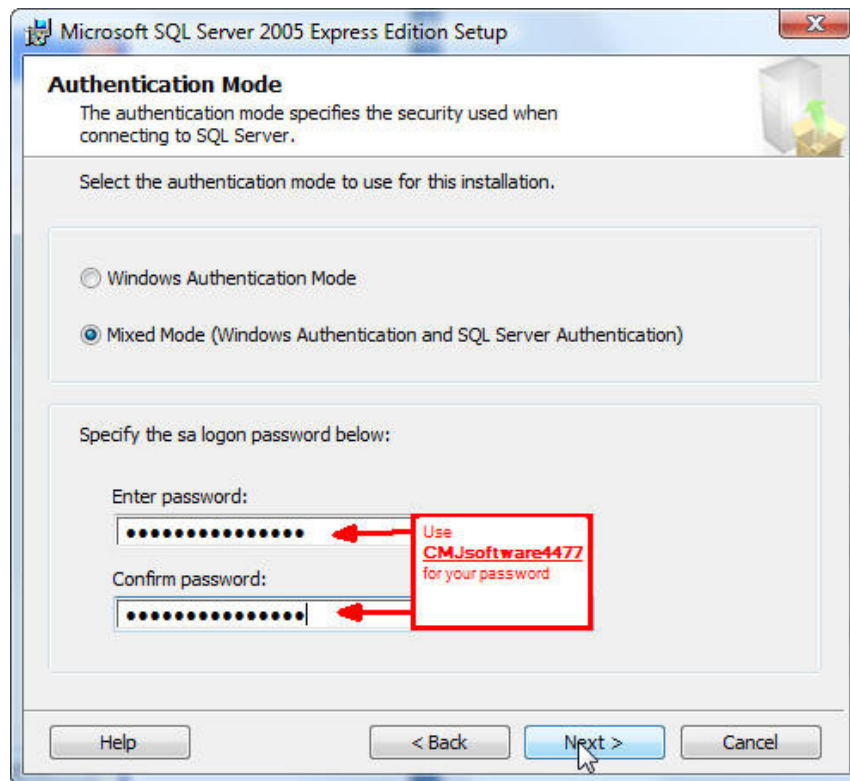
7. In the Instance Name window, select the **Named instance** radio button and the instance name should be CMJ. Click the **Next** button.



8. Click the **Next** button on the Existing components window.
9. In the Service Account window, select **Local system** for the system account, make sure to check both SQL Server and SQL Browser under Start Services at the end of setup, and then click the **Next** button.

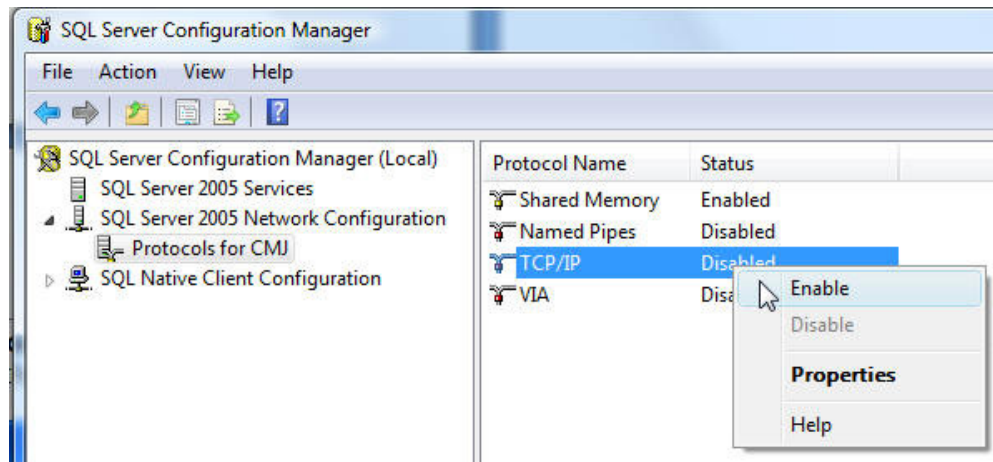


10. In the Authentication Mode window, select the **Mixed Mode** option and specify the sa logon password to be **CMJsoftware4477**. Click the **Next** button.

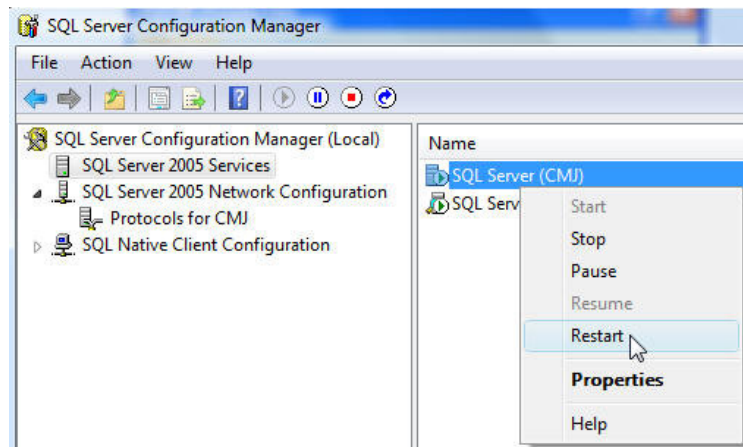


11. Click the **Next** button on the Collation Settings window.
12. Click the **Next** button on the User Instances window.
13. Click the **Next** button on the Error and Usage Report Settings screen.
14. Click the **Install** button on the Ready to Install window.
15. Click the **Next** button on the Setup Progress window.
16. Click the **Finish** button on the Completing Microsoft SQL Server 2005 Setup window.
17. Now it is necessary to enable TCP/IP in the SQL Server Configuration Manager. Click on the Windows **Start** button→**All Programs**→**Microsoft SQL Server 2005**→**Configuration Tools**→**SQL Server Configuration Manager**.

18. In the SQL Server Configuration Manager, click on SQL Server 2005 Network Configuration then double-click on Protocols for CMJ. Next, right-click on TCP/IP and select **Enable**. For the changes to take effect, SQL Server must be restarted.



19. Click on SQL Server 2005 Services and then right-click on SQL Server (CMJ) and select Restart.



20. Also make sure the SQL Server Browser is up and running. Right-click on SQL Server Browser and click on **Start**. You may have to click on **Properties** then the **Service** tab and change the *Start Mode* to Automatic before you can start the SQL Server Browser. Both SQL Server and SQL Server Browser should be on Automatic for their Start Mode.